

Christ Church CE VA Primary School

'Let your light shine'



Headteacher: Emma Bray

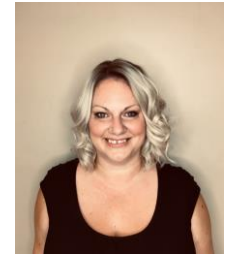
Deputy Headteacher: Rachael Clarke

Senior Teachers: Aaron Rogers & Emily O'Dea

14 October 2022

NEWSLETTER NO 5

FROM THE HEADTEACHER



This week our children were enthralled by an outstanding performance of Scrooge from M & M theatre group. The show was reported as 'the best show I've ever seen' by an overwhelming number of pupils. As part of our wider opportunities offer, we intend for all children to experience an in-house theatre group, as well as attend a public performance at a local theatre. School leaders are aware that children have been unable to access live performances due to the disruption of Covid, and have made plans to increase opportunities for performing arts, including a wider variety of music lessons. Exciting news to follow from our Music Co-ordinator, Mrs Coomber!

PARKING AT THE BEGINNING AND END OF THE SCHOOL DAY

We are aware that parking at the beginning and end of the school day has been problematic whilst the road improvements are being carried out but I would ask that you DO NOT park on double yellow lines particularly at the back of the school on Wooler Road. Twice last week the road was blocked and cars passing each other were having to mount the pavement which is extremely dangerous especially with children walking about. If you do have to use your car there is plenty of one hour parking on the Boulevard, with walkways by the old Library building which bring you to the roads at the back of the school or parking is normally available in Montpelier opposite the Church with steps which again bring you to the back of the school. Many thanks.



VOLUNTEERS NEEDED

Girlguiding are looking for volunteers to help at various locations in the Weston area. If you have a few hours free and are interested in helping out it would be much appreciated! Every commitment counts, there is no level of commitment too small and you don't need any guiding experience. For more information please contact Mandy Nun – miltondistrictcommissioner@gmail.com.

TRANSFER TO SECONDARY SCHOOL

Please remember that all applications for Secondary School places MUST BE with North Somerset Admission Department by 23.59 on Monday, 31 October. Reminder emails have been sent out to parents who haven't applied today.

DONATIONS NEEDED

Following training from Opal, we are gradually introducing a new playground system for lunchtimes! To start this off we are looking for donations and will be asking for a number of things. At the moment we



✉ Baker Street, Weston-super-Mare, North Somerset, BS23 3AF

📧 office@christchurchprimaryschool.org

☎ (01934) 620738

www.christchurchprimaryschool.org



KALEIDOSCOPE
Multi Academy Trust

are looking for any unwanted scarves and hats (any sort of hat please!), sheets, curtains or large pieces of fabric. Please can these be clean, placed in bags and handed into the school office. Watch this space for more requests!

RAGS TO RICHES

On Monday, 7 November we will be having another collection of unwanted clothes, bedding, shoes, handbags etc etc. A reminder will be sent out nearer the time but if you are having a sort out over the break please bear this in mind!

PERSONAL BESTS

Congratulations to the following children who all achieved a personal best this week!

- Reception** - Vienna for being a superstar with her phonics and writing!
- Year 1** - Kevin for working hard every day in every lesson!
- Year 2** - Esmae for her excellent work in maths this week.
- Year 3** - Theo for writing a detailed tale of suspense, using great techniques!
- Year 4** - Sara for excellent innovation of our water cycle writing.
- Year 5** - Ellis for amazing art work!
- Year 6** - Lena for developing her independence and getting full marks on her test!



STARS OF THE WEEK

Jenson from Year 2 is our child star of the week! Jenson always shows kindness which is very important to everyone. Well done Jenson.

Our adult star goes to Mr Ives, our Site Manager. Mr Ives looks after us all by ensuring everything in school is safe and he has been extra helpful this week as he has had to work additional hours while our broadband is being updated. Huge thank you Mr Ives!

STAR WRITER

Nellie in Year 2 is our Star Writer this week. Nellie not only wrote a beautiful poem but also read it out in Service this week! Fantastic work Nellie!



CLASS DOJOS

Well done to Sara, Oli, Arlo, Grace, Silvie in Year 4 and Amelia in Year 5, for achieving their Bronze certificate this week (75 DoJo points) keep up the good work!

READING RAFFLE WINNERS

As you know each of our children who read 4 or more times at home are entered into our reading raffle and two lucky winners are picked each week. Our winners this week are Eli in Reception and Szymon in Year 6. Enjoy your new books!



MIDNIGHT THE OWL

Year 4 have had a fantastic week again with 70% of the children reading 4 or more times at home. Midnight the Owl will be back with your class again next week!



ROARY THE LION

Congratulations FS2!!! You have had a great week of attendance and so Roary the Lion will be with your class next week.

REMINDER OF DATES

| | | |
|------------------------|---|---|
| Monday, 17 October | - | p.m. Year 1 parent meetings only |
| Wednesday, 19 October | - | Whole school flu immunisation |
| Thursday, 20 October | - | 2.30 p.m. Y2 SATs meeting in School Hall |
| Friday, 21 October | - | 3.10 p.m. School closes for end of Term 1 break. |
| Monday, 31 October | - | 7.45 a.m. Breakfast Club opens 8.35 a.m. School reopens for Term 2 |
| Tuesday, 1 November | - | Healthy Life Roadshow in School Hall |
| Monday, 7 November | - | Rags to Riches Collection a.m. Individual & Sibling photos taken in school |
| Tuesday, 8 November | - | 3.00 p.m. – 5.30 p.m. Parents Evening (details to follow) |
| Wednesday, 9 November | - | a.m. FS2 & Y1 to Cinema (details to follow) 4.00 p.m. – 7.00 p.m. Parents Evening (details to follow) |
| Thursday, 10 November | - | a.m. Years 2, 3 & 4 to Cinema (details to follow) |
| Friday, 11 November | - | a.m. Years 5 & 6 to Cinema (details to follow) |
| Friday, 18 November | - | Children in Need Day |
| Thursday, 24 November | - | Archery event @ Worle Village (details to follow) 2.45 p.m. Y6 Camp meeting for parents |
| Wednesday, 7 December | - | Wear your Christmas Jumper or Hat to school 9.30 a.m. FS2 Nativity to parents (details to follow) 12 noon Christmas Lunch |
| Thursday, 8 December | - | 1.30 p.m. KS2 to Pantomime @ Blakehay (details to follow) 3.00 p.m. Christmas Fayre |
| Friday, 9 December | - | 1.30 p.m. KS1 to Pantomime @ Blakehay (details to follow) |
| Monday, 12 December | - | p.m. FS2 Christmas Party (details to follow) |
| Tuesday, 13 December | - | 10.00 a.m. Y1 & 2 Christmas performance @ Church p.m. Year 5 & 6 Christmas Party (details to follow) |
| Wednesday, 14 December | - | p.m. Years 1 & 2 Christmas Party (details to follow) |
| Thursday, 15 December | - | p.m. Years 3 & 4 Christmas Party (details to follow) |
| Friday, 16 December | - | 10.00 a.m. Carols around the Tree @ Christ Church Church 3.10 p.m. School closes for the Christmas break |
| Tuesday, 3 January | - | INSET training day. School closed to pupils. |
| Wednesday, 4 January | - | INSET training day. School closed to pupils. |
| Thursday, 5 January | - | 7.45 a.m. Breakfast Club opens 8.35 a.m. School reopens for Term 3 |

